



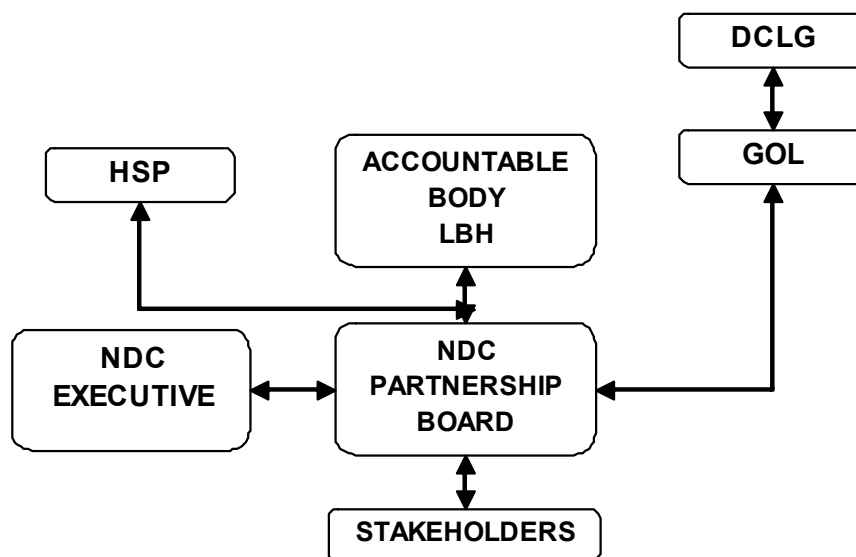
## Appendix 1 – An overview of The Bridge NDC programme

### 1. NDC Overview

New Deal for Communities is a Central Government-led regeneration programme for the regeneration of some of the UK's most deprived neighbourhoods.

The Bridge NDC is a £50 million regeneration programme based in the South Tottenham and Seven Sisters area. It is made up of a partnership between local residents and key agencies such as: Haringey council, the National Health Service, The Metropolitan Police, Job Centre Plus, HAVCO (from 2009) and North London Business (from 2009). It began in April 2001 and runs for ten years till March 2011. The Bridge NDC has around 11,000 residents and 4,500 homes. The area was chosen for the Haringey New Deal for Communities bid because the area is one of the most diverse and disadvantaged areas in London and one of the most deprived in Britain. The area suffers from severe and entrenched unemployment which is three times the London rate. Over 70% of residents belong to minority groups and around 180 languages are spoken locally. It has a very high proportion of young people and relatively low levels of educational attainment and vocational skills, leading to high levels of unemployment, poverty and benefit dependency. The programme is required to create physical change, employment opportunities, improvements in health and wellbeing, improve the economic profile of the area and engage the wider community. Our focus is on improvement through community engagement and building sustainable and local arrangements for delivery using statutory partners and the voluntary sector where necessary.

### 2. NDC Governance Structure





### 3. The Themes of delivery , grant / match funding, outcomes delivered

3.1. Since 2006 The NDC delivery theme structure is grouped into three workstreams:

- Education, enterprise and employment (3E)
- Health, Social Care, Sport and Leisure (HSSL)
- Neighbourhood Services (Housing, Environment and Crime)

3.2. The Bridge NDC total lifetime grant and match funding brought into the area are shown below:

Total spend by year:

Year	NDC Spend	Match funding	Total Spend
2001/02	1,875,619	1,008,237	2,883,856
2002/03	4,714,785	2,307,810	7,022,596
2003/04	8,887,610	3,073,261	11,960,871
2004/05	6,855,000	3,109,676	9,964,676
2005/06	8,955,388	4,388,709	13,344,097
2006/07	6,552,986	4,289,883	10,842,869
2007/08	6,427,324	6,118,719	12,546,043
2008/09	3,885,000	2,609,465	6,494,465
<b>Total</b>	<b>48,153,713</b>	<b>26,905,760</b>	<b>75,059,473</b>

Total lifetime spend by Theme area:

Community Involvement	3,672,606
Crime	3,418,976
Education	9,130,381
Enterprise, Jobs and Training	2,746,705
Health	6,138,839
Housing and Environment Theme	18,570,811
Management and Delivery	4,475,575
<b>Total</b>	<b>48,153,713</b>



**Haringey Council**

3.3. A final evaluation of the NDC programme will be available in 2010/11. The latest performance review reveals that the NDC has delivered the following successful outcomes (from MORI 2008):

- 3.3.1. **Community involvement:** The NDC has increased the residents' quality of life by 8% points since 2002, 80% of the NDC residents feel that their quality of life is good and very good.
- 3.3.2. **Community involvement:** 58% feel part of the community (a great deal/fair amount), 27% points increase since the beginning of the programme.
- 3.3.3. **Crime:** There is a reduction of 50% points since 2002 regarding residents thinking that "people being attacked in a problem in the area".
- 3.3.4. **Crime:** Car crime has been reduced by 37% points since 2002, only 8% of the NDC residents feel that this is a serious problem.
- 3.3.5. **Crime:** 65% of the NDC residents feel very safe when walking alone in the area after the dark there has been an increase of 26% points since 2002.
- 3.3.6. **Housing and environment:** 60% of the NDC residents think that the area has got much better over the last 2 years, 10% points increase since 2006.
- 3.3.7. **Housing and environment:** 79% of the NDC residents believe that the NDC activities delivered have improved this area as a place to live, 41% points increased since 2002.
- 3.3.8. **Housing and environment:** Satisfaction with the NDC area has increased by 21% points since the beginning of the programme, 75% of the NDC residents feel satisfied with the area as a place to live.
- 3.3.9. **Employment:** 57% of the NDC population is economically active now, 2% points increase since 2006.
- 3.3.10. **Employment:** Worklessness rates have decreased by 07% points between 2006 and 2007
- 3.3.11. **Health:** 58% of the NDC residents believe that they have "good health" up 11% points since 2006.



#### 4. 2009/10 Key Projects

<b>Project name</b>	<b>Scope</b>	<b>Type of initiative</b>
Key steps mentoring	Support Key stage 4	Education
Stitch in time	Skills, training and employment support in the fashion industry	Unemployment
Heading for success	Adult literacy, numeracy and ICT programme	Education
Homework club network	English learning for children and families	Education
Rev-up	Tailored business and employment support	Unemployment / business support
Continuing to bridge the Gap	Pre- ESOL learning support	Education
Active for health	Healthy living lifestyle project	Health
Easy access to talking therapies	Computerised therapy for NDC residents suffering anxiety and depression	Health
Reach Out	Tackles a number of inter-related health issues.	Health
Footcare Plus	Footcare services and business development	Health
Family intervention and diversion	Prevention advise for young people to prevent antisocial behaviour.	Community safety
MTD (St Anns & haringey)	Community project (environmental)	Community cohesion / wellbeing
MTD (Tottenham &SS)	Community project (environmental)	Community cohesion / wellbeing
Helston food growing	Food growing	Environment / unemployment
Going forward young advisors	Young people training to become community leaders	Community cohesion / wellbeing
Domestic Violence	Arts based therapy for women survivors of domestic violence	Health
Summer fun summer uni	Summer activities for young people	Community cohesion / wellbeing / health
Family Pedal Power	Cycling maintenance training for young people	Community cohesion / wellbeing / health
Neighbourhood Plan	Project to facilitate the neighbourhood plan implementation	Environment
Succession and Legacy	Provision of staffing resources to complete the NDC programme	NDC Succession strategy implementation
Partnership activities	Cross thematic communications project	NDC events, conferences, publicity.
Laurels programme manager	Management of the Laurels Healthy living centre	Laurels' programme manager salary